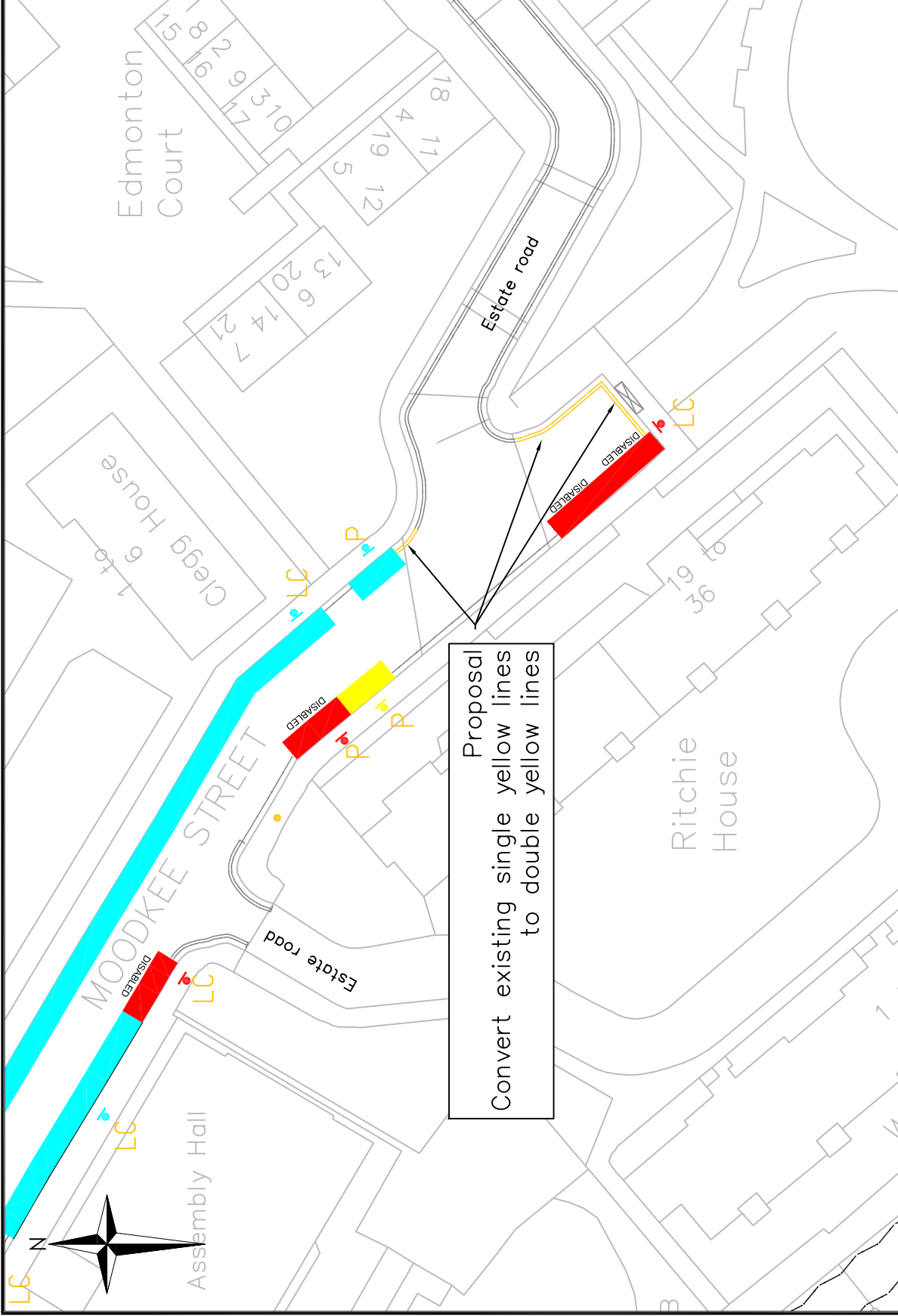
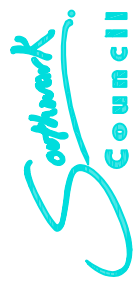


- Legend**
- Existing single yellow lines
 - Existing double yellow lines
 - Proposed double yellow lines
 - Existing permit bay
 - Existing disabled bay
 - Existing motorcycle bay



Public Realm Projects Parking Design Environment and Leisure Floor 3, Hub 1 Southwark Council 160 Tooley Street PO Box 64529 London, SE1P 5LX www.southwark.gov.uk/parkingprojects		Project 1516 LOCAL PARKING AMENDMENTS		Community Council BERMONDSEY AND ROTHERHITHE		Ward(s) ROTHERHITHE		Date 17/03/15	Scale 1:500 @ A4	Drn MH	Chk TW	App TW
		Drawing Title MOODKEE STREET PROPOSED DOUBLE YELLOW LINES		Status APPENDIX 3		Dwg No. 1516Q1006	Rev A	Rev Description Date Drn Chk App	Rev Description Date Drn Chk App			